



**AN INTRODUCTION TO
PROSPECT HOSPICE**
FUNDED BY THE COMMUNITY,
FOR THE COMMUNITY



CONTENTS

3	About Prospect Hospice	14	Fundraise
4	Our history	16	Pledge
6	How we help	17	Shop
8	How your support makes a difference	18	Volunteer
10	In memory	20	Thank you
12	Donate	22	Get in touch

ABOUT PROSPECT HOSPICE



Since 1980, Prospect Hospice has been part of the community in Swindon and north east Wiltshire, dedicating itself to providing end of life care to local people. We bring care, comfort and confidence, around the clock, every day of the year.

Prospect Hospice is a registered charity and the local community raises millions each year to fund all the services we're able to offer to our patients and their families free of any charge.



OUR HISTORY

Our presence as a hospice in your community is thanks to the determination of our founder, the Reverend Derryck Evans, and those who shared his vision to ensure that there was specialised end of life care for anyone that needed it locally.

Thanks to local people giving their skills and time, and some initial funding from people and businesses, the then Prospect Foundation was established in 1980. Initially operating a two-nurse, home-based nursing service, as our reputation grew and the demand for our care increased, we found a base at the Victoria Hospital in Swindon's Old Town, which is now apartments on Okus Road.

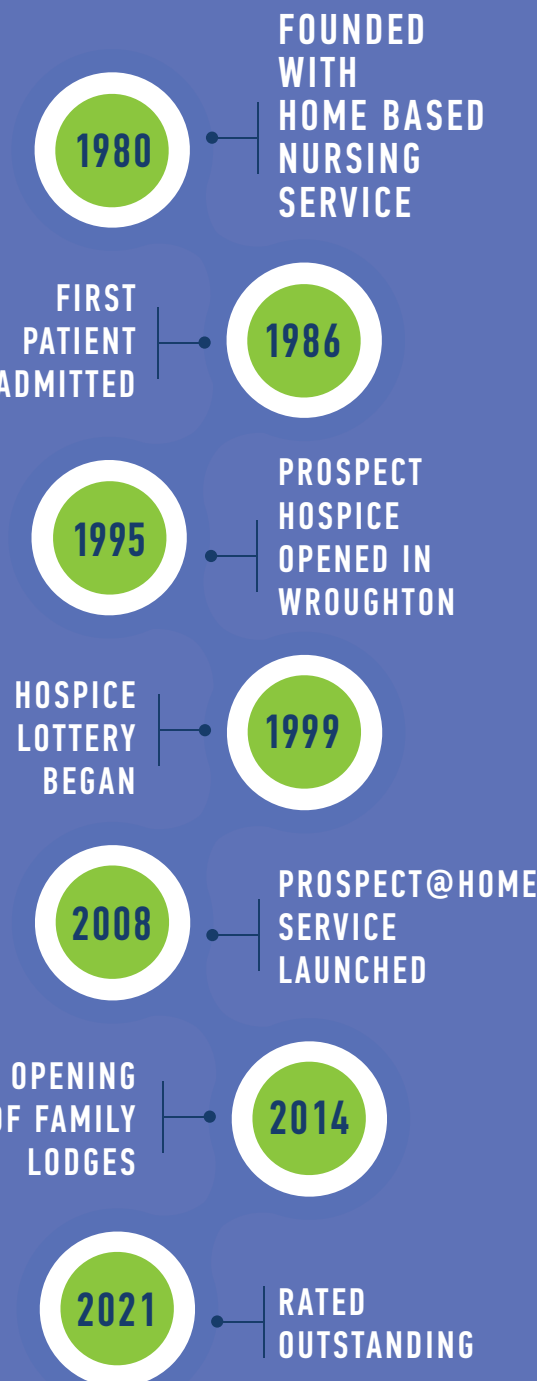
As Prospect Hospice moved into a second decade, we needed new premises, and launched a community appeal, led by our late honorary president David Margesson MBE, for a purpose-built hospice that would become a permanent base. The appeal to raise the £3 million needed to build the hospice achieved its target in 1995 and, later that year, Princess Anne officially opened the new Prospect Hospice. Today, we're still using that same building in Wroughton as a base for our clinical teams.

Prospect Hospice's reputation was – and is – rooted in our care, and soon our nurses were caring for patients beyond Swindon: in Highworth, Royal Wootton Bassett and Marlborough and many other places. The more people whose lives were touched by our care, the more people began to show their appreciation of our work.

A MODERN FAR REACHING HOSPICE

Over the years have seen the development of new services, including the day hospice, family support team, therapy team and Prospect@Home service, each reflecting our belief that care for people who are dying is about so much more than just their final days.

Our latest inspection by our regulators The Care Quality Commission rated us as 'outstanding' and recognised how our care teams ensure our patients are active partners in their care and feel they are truly cared for and supported by hospice staff.



HOW WE HELP

Our specialist teams of nurses, doctors, physiotherapists and healthcare assistants provide a range of support and services designed to keep our patients comfortable, active, independent, mobile and well - emotionally, physically and practically. All of our staff are experienced in supporting people with life-limiting illnesses to manage the challenges that patients and their families are facing.

Inpatient unit

Our bespoke inpatient unit is designed to give patients comfort, flexibility and privacy, surrounded by our beautiful gardens and wildlife. Patients come to us for short term symptom relief, for respite from their families and carers or as their chosen place to die.



Support at home

Most of our patients choose to be cared for at home by our community teams who provide specialist care to our patients and their families in the comfort of their own home.

Emotional and psychological support

It's natural for our patients and their families to experience a range of emotions when dealing with a terminal illness diagnosis. Our specialist staff provide emotional support and counselling to patients, their families and carers. Support can be given face to face or remotely online.

Practical support

Dealing with the practicalities of adjusting to a terminal illness can be stressful. Our team can work with patients and their families to help them live independently and stay active and mobile for longer in group or one-to-one sessions and can loan you equipment such as wheelchairs if they are required.



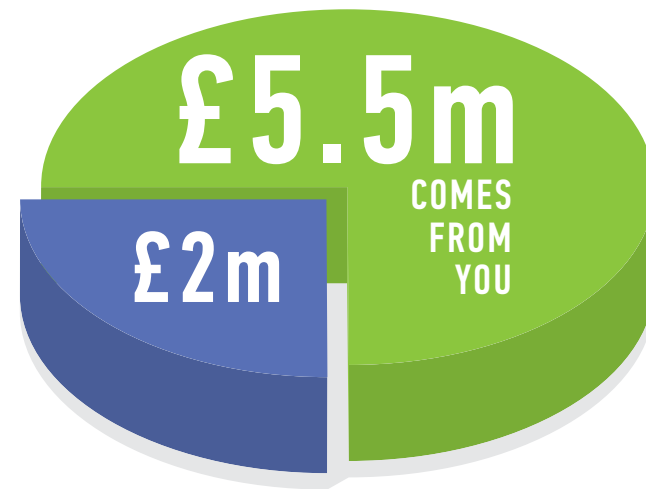
If patients and their families are worried about money and how an illness might affect their finances, we can give information and advice about benefits and financial assistance.

All of the support outlined above is available to all Prospect Hospice patients and most is also available to family, friends and carers, including children.



HOW YOUR SUPPORT MAKES A DIFFERENCE

We couldn't do any of it without the support of our community. It's as simple as that.



While we do receive a small amount of support from government organisations such as the NHS, 75% of our funding comes from local people who recognise the need for our work in the community.

Because of our community, who raise millions of pounds each and every year, we're there to provide essential end of life care but, most importantly, thanks to donations, we can offer this care to our patients and their families free of charge – meaning they don't have to worry about how they pay for their care on top of all the other concerns they have when diagnosed with a terminal illness. Quite simply, we can't do it without you.

It's only because of our community that we're able to be here for those that need us. If you would like to support your local community hospice there are many ways you can.



BRENDA'S STORY

Brenda Leddy says that after her son, Danny, was diagnosed with terminal cancer at the age of 34 she and his partner, Ellie, did all they could to make his last year as normal and happy as it could be.

"He was diagnosed with cancer in January 2017, and in June that year he was told it was terminal. Ellie and he wanted to marry and he wanted to die at home, and with Prospect Hospice's support both those things happened," says Brenda.

Danny spent some time in Prospect Hospice's inpatient unit and the staff there made sure they could get married in the register office on 1 September and spend their first night as a married couple together in an hotel. After that, Prospect Hospice staff pushed two beds together in a room in the inpatient unit so Ellie and Danny could spend a few nights together there too – they were brilliant.

Once Danny was stabilised, he was able to go back home and

Ellie and I looked after him. He did have several trips back to the hospice because they were the only ones who could sort out his pain relief properly, but we were all so glad he could be at home as he wanted."

Danny died at home on 19 December 2017.

"It was devastating for us all. For the first year after his death I kept telling myself, you can get through this. But I wasn't okay at all. I was drowning in sorrow. I wanted to die.

Then in February 2019 I met Louise from the Prospect Hospice bereavement team.

Without intervention from Louise my marriage would be over. My husband is not Danny's father, and in my grief I said some

things which were difficult for him to hear, saying things like 'it's not your son, how would you know?' Louise explained some issues couldn't be solved and suggested putting them in a box, putting the lid on and leaving them there. I did this and it saved our marriage and my sanity.

I will be so grateful for the rest of my life that Louise and I met. I am no longer on antidepressants and I can now live with the newer version of myself, without my son. I never thought I would ever be able to say those words.

I still have peace of mind that, should I need support at a later stage, I can call on the hospice bereavement team again. Our community is so, so lucky to have Prospect Hospice in our midst."

IN MEMORY

At Prospect Hospice, we understand the importance of celebrating life, remembering those who were special to us and keeping memories alive. Many choose to donate to the hospice in memory of a loved one and ensure the care and support they received is available for the next person who needs it.



Make a donation in memory

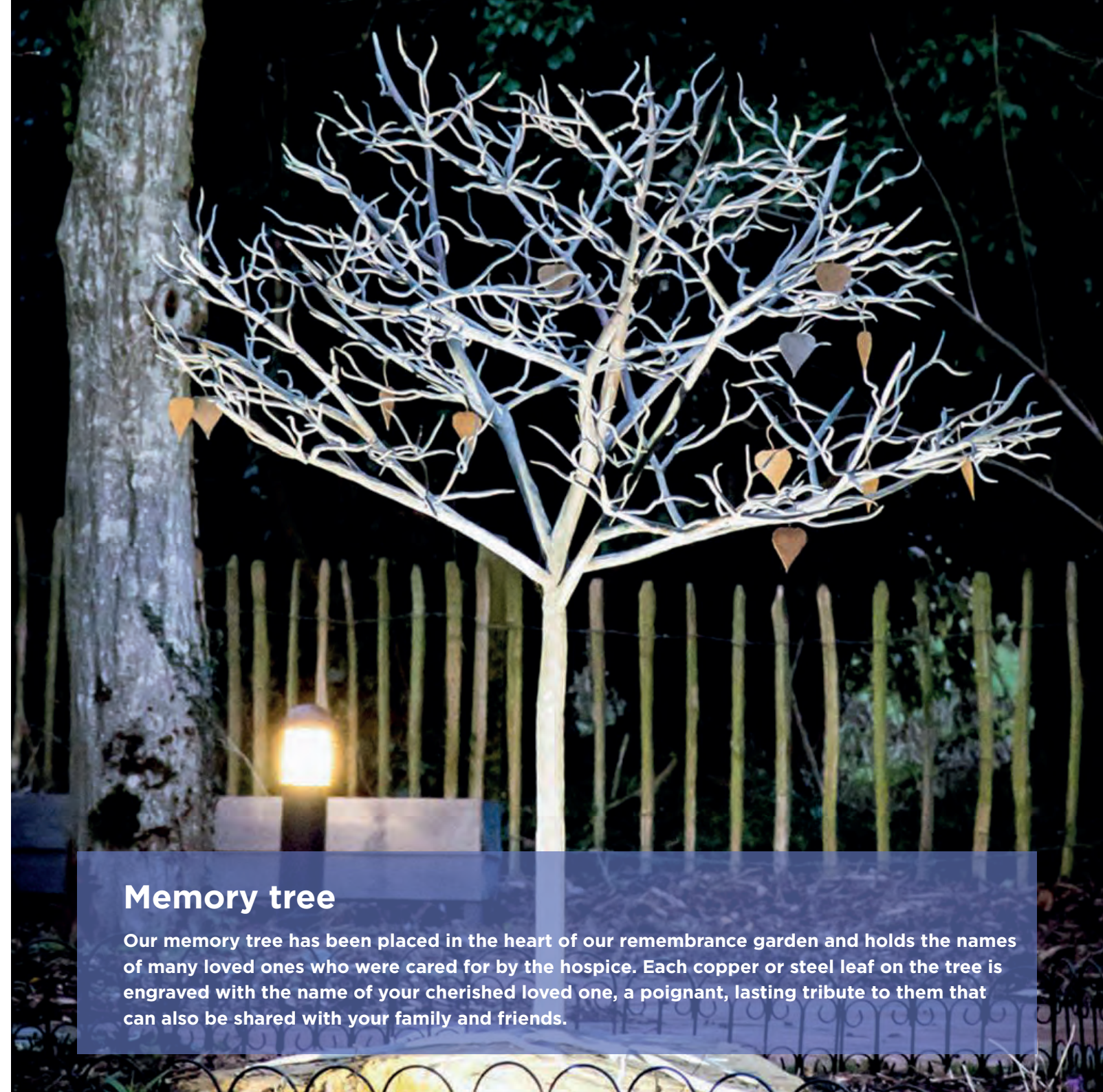
Making a gift to Prospect Hospice in the name of a loved one is a memorable and lasting way to celebrate their life. There are many ways to make a donation in memory of someone close to you.

Donate in lieu of flowers at a funeral

Many people choose to hold a collection at a funeral or memorial service, or request family and friends to make a donation rather than buying flowers.

Tribute funds

A tribute fund is a special fund which is created in someone's memory, providing family and friends with a shared space. An area to celebrate the life of a loved one, creating a lasting tribute which supports the work of Prospect Hospice. This can include sharing memories through uploading videos, music clips and stories to lighting memorial candles or simply making a donation.



Memory tree

Our memory tree has been placed in the heart of our remembrance garden and holds the names of many loved ones who were cared for by the hospice. Each copper or steel leaf on the tree is engraved with the name of your cherished loved one, a poignant, lasting tribute to them that can also be shared with your family and friends.

DONATE

You can make a donation to the hospice in a number of ways including through the post, via our website, where you can set up a regular gift, or in our local charity shops.



Set up a regular gift

By becoming a regular donor, you're playing an important part in ensuring we can plan better for future patient care. Your ongoing support means we know you're not only supporting our work today, but that you'll also be here for us and our patients tomorrow.

To set up a regular gift to the hospice, visit
www.prospect-hospice.net/donate

Support an appeal

Each year, we run appeals to help raise funds to pay for our care or for specialist equipment needed to support people at the end of their lives.

Supporting these appeals makes a huge difference to the lives of those we care for and every donation goes towards the exact appeal detailed.



Join our lottery

By joining our lottery from just £1.50 each week, you'll not only be supporting the hospice but will be in with a chance of winning some great cash prizes too.

Each week, the draw takes place with 28 cash prizes to be won and, if our rollover prize keeps rising, we could be sending you a cheque for £5,000

To find out more or to join, visit
www.prospect-hospice.net/lottery

FUNDRAISE



EVENTS

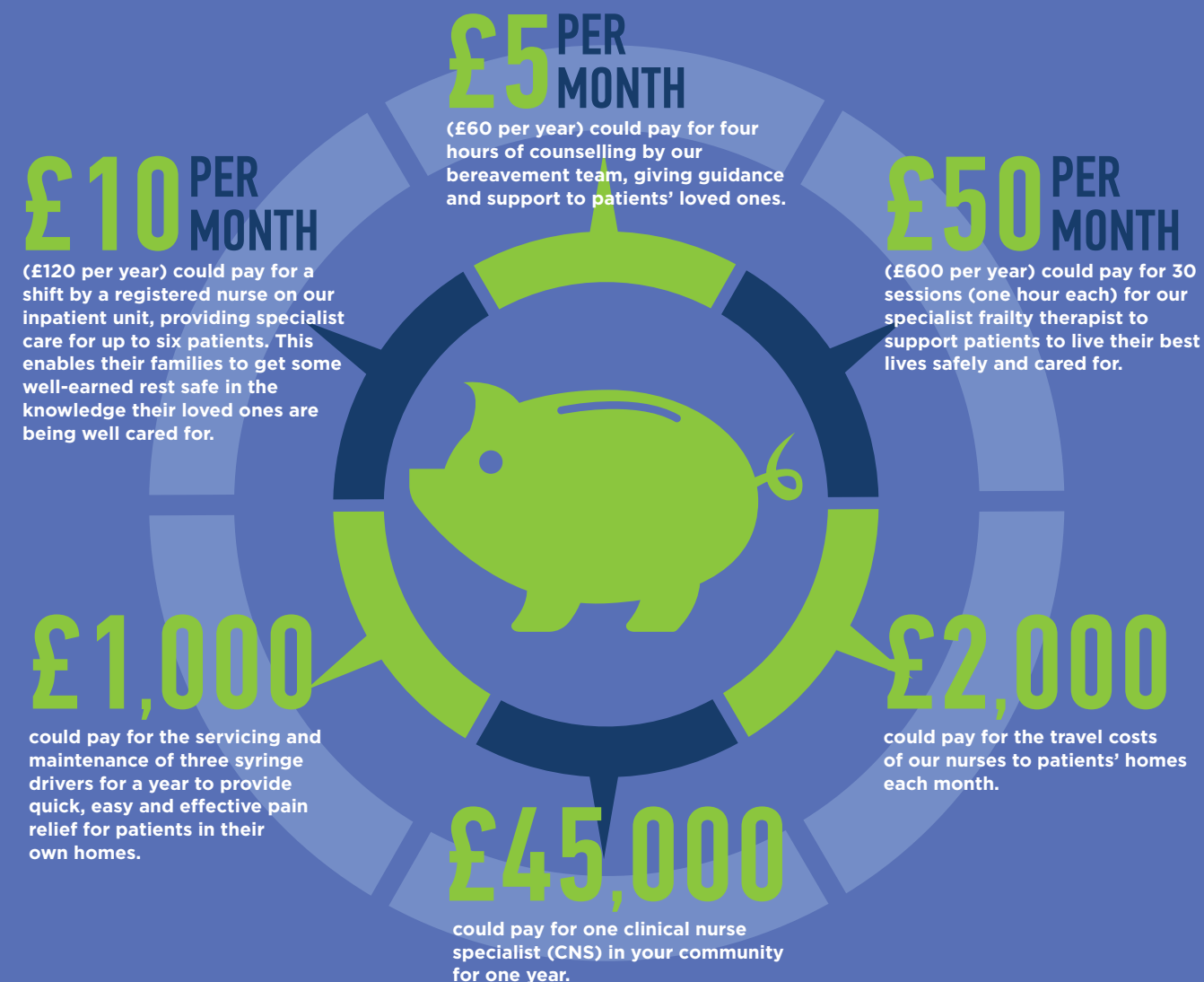
Each year, hundreds of people gather together at our events to raise money and have fun while doing so. There's a nominal entry fee to take part and thousands of pounds is raised through sponsorship. We have a range of events on throughout the year to cater for everyone and you can find out more about these at www.prospect-hospice.net/events.

If you'd like support organising your own event to raise money, contact our fundraising team via the details in the back of this book.

Support through your business

Do you run a business or work for a local company that has charities at its heart? Ask about how they might be able to support the hospice through corporate fundraising events, choosing us as charity of the year or setting up payroll giving where staff can donate, before tax, to a charity of their choice.

HOW WE SPEND YOUR DONATIONS



PLEDGE

Pledging to leave a gift in your will leaves a lasting legacy and means our skilled and compassionate team's dedicated care continues for local people and their families at the end of their lives.

To find out more about leaving a gift in your will to Prospect Hospice please email legacy@prospect-hospice.net

ONE
IN FIVE

OF OUR PATIENTS
IS CARED FOR THANKS
TO A GIFT TO
THE HOSPICE LEFT
IN A WILL.

SHOP



You'll find our shops dotted all over the community and you're never far away from one.

Each time you shop with us, you'll be getting quality, pre-loved products and also know that the money you spend with us will be going towards supporting local people at the end of their lives.

Find the location of your nearest shop at www.prospect-hospice.net/shops

Find us on eBay

When our shops are closed, there's still plenty to browse via our eBay shop. Purchases from here also have the added bonus of being delivered directly to your door.

Explore everything we have to offer at www.prospect-hospice.net/eBay

Donate your pre-loved goods

You can donate all your good quality pre-loved clothes to our shops and we also collect furniture from your home too. If you no longer want it or need it, we do. Find out more about how to donate at

www.prospect-hospice.net/howtodonate

VOLUNTEER

It's not just money that people give to the hospice some also dedicate their time to help us in a range of ways including helping customers in our shops, delivering complimentary therapy, marshalling our events, serving meals to our patients, assisting with administration tasks and gardening.



By becoming a volunteer at Prospect Hospice, you'll be joining a dedicated army of 700 local people who give their time and, just like our care, our volunteering experience is tailored to you too making sure you get the most out of your skills and knowledge, interests and availability. There really is a volunteering role for anyone matching the skills you have to offer.

Find out more about volunteering at Prospect Hospice at www.prospect-hospice.net/volunteering or, for an informal chat, call our friendly volunteer services team on **01793 816193** or email volunteering@prospect-hospice.net



KEVIN'S STORY



Maureen King loved her job at the Royal Mail in Swindon, but not long after being diagnosed with motor neuron disease in 2016 she had to stop work. She was becoming breathless, and anxiety about her future meant she slept poorly. Her husband, Kevin, soon became her full-time carer.

Kevin says that the various types of support they were given by Prospect Hospice improved the quality of both their lives considerably.

"Maureen was on oxygen and she used to get very panicky and agitated," said Kevin.

"Her biggest fear was that she could choke to death. The Prospect Hospice therapists visited her at home and spent time with her. The breathing techniques they taught her really helped to keep her calm."

Maureen also attended day therapy sessions at the hospice where she enjoyed taking part in different activities and meeting other people who were experiencing similar illnesses.

Maureen also benefited from a class at the hospice which taught techniques to help with sleeping. During her illness Maureen stayed

in the hospice's inpatient unit on three occasions, including in June 2018 when she celebrated their son's birthday.

"Maureen loved her kids and grandkids - they were her life, along with me. When she was staying in the hospice for respite care it was our eldest son's birthday and the staff encouraged us to have our son's party there.

"We had it in the garden outside the inpatient unit and the staff took Maureen there in her bed. Maureen absolutely loved it and couldn't stop talking about it. It is a really special memory."

Maureen and Kevin were also supported by the hospice's social workers, who helped Kevin to access benefits he was entitled to.

"They were absolutely fantastic. They visited us at home and helped us with anything they could. They were always there if

we had a problem or needed help with anything," said Kevin.

Sadly, Maureen died in May 2019, aged 60, after contracting pneumonia.

Kevin, who was married to Maureen for 37 years, was so thankful for the outstanding care given by the hospice that he volunteered with the charity in the retail team as a van driver. He joined it three months after Maureen died and volunteers five full days a week.

"Being a volunteer at Prospect Hospice is the best 'job' I've ever had," he said. "I enjoy it and I just felt I had to give something back to thank them for caring for my wife. By volunteering I'm helping to spread the word about the hospice and I'm helping it to raise the funds it needs."

THANK YOU

Prospect Hospice really is a partnership. We know we can't be there for our patients without the support of our local community and we're incredibly grateful to everyone that donates, however they donate, to enable us to be there for those people who need us at the end of their lives.

In my role as matron at the hospice, I have the privilege of seeing where donations go and how they help those in our community. From caring for our patients at the end of their lives and making those last few days as positive as they can be, to supporting families after a death with bereavement support; helping them navigate a journey without their loved one by their side.

If you need any guidance or support from us, please get in touch with our fundraising team – you'll find their contact details in the back. We'll ensure every donation we receive stays in the local area and is used to support local patients and their families.

Jane Green

**Jane Green
Matron**



GET IN TOUCH

Should you wish to support us in any way, you may find the contact details below useful.

Fundraising:

T: 01793 816161

E: fundraisingandevents@prospect-hospice.net

Volunteering:

T: 01793 816193

E: volunteering@prospect-hospice.net

Shops:

T: 01793 813362

General enquiries:

T: 01793 813355

E: info@prospect-hospice.net

Website: www.prospect-hospice.net

FIND OUT MORE

Find out more about what's going on at the hospice and how we're using your generous donations to fund our vital work at www.prospect-hospice.net

You'll also discover some great fundraising ideas and get inspiration from our supporters on our social media channels. Follow us on Facebook, Instagram, Twitter and YouTube to hear more about us. Just search for Prospect Hospice.

SHARE YOUR STORY

If you've been supported by the hospice, we'd really like to know more about your experience. You can find out more about how to give your feedback at www.prospect-hospice.net/feedback and, if you'd like to work with us to share your story with others to help showcase what we do, please get in touch with the team via communications@prospect-hospice.net



www.prospect-hospice.net



Registered with
**FUNDRAISING
REGULATOR**

Follow Prospect Hospice on



Prospect Hospice Ltd. Registered Charity No. 280093



Outstanding

